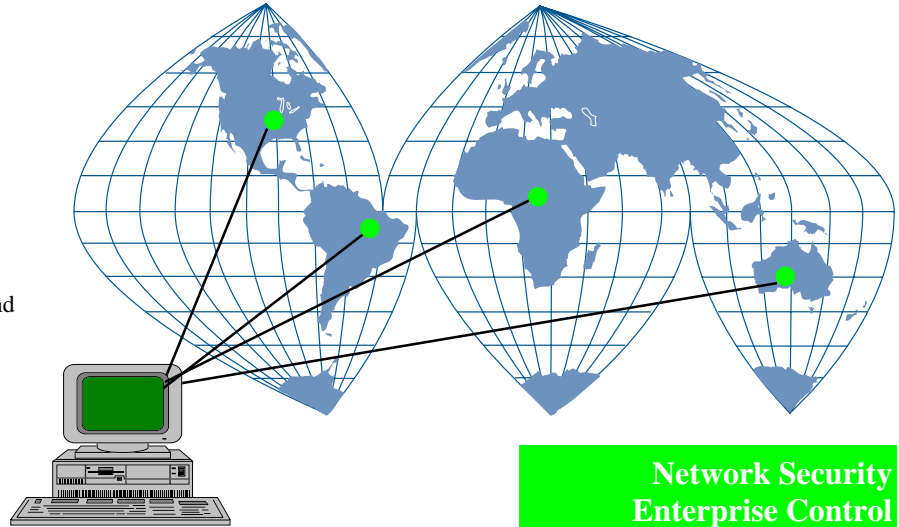


# CorScan Series

## Network Management Control Software

**CorScan**, user-friendly software for managing the CORNET line of Access and Switching products.



**D**ata networks are complex, typically consisting of hundreds of data lines spread out across the entire enterprise network. These lines may be analog, digital, T1, E1, Token Ring, Ethernet or any of the many other types of transmission media that make up today's complex systems.

### **Single Point Line Management.**

Imagine being able to control, monitor, and switch well over 16,000 lines from a single point. The CorScan control platform combined with various CORNET products takes this capability out of the realm of the imagination into reality.

### **Multi-User Client/Server Environment**

CorScan allows direct access by up to sixteen users providing multiple points of network control.

CorScan is available with SNMP control, allowing any standard SNMP manager full and complete access to the data management system.

### **Intelligent Local & Enterprise Switching**

The intelligence built into CorScan, makes management of lines in unmanned remote sites as easy as though they were next door. The user need only know the name of the line that is to be controlled. CorScan determines where in the enterprise the line is

located, sends the necessary commands to that location, and performs the switching function.

### **Flexible Multiple Layer Security**

Most control systems security is rigid, assigning users to one level of system access on a hierarchial basis.

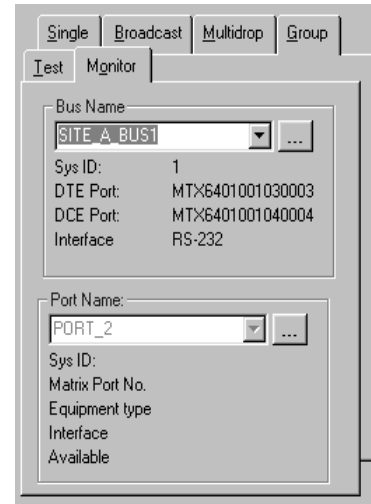
For example, one level of security changes passwords, another level performs all functions except change passwords, etc.



CorScan gives system administrators greater flexibility when assigning system access functions to a user.



interactive tests with a Data Test Set. Data from remote locations can also be brought back to the central site for monitoring. Contact CORNET for further details.



## Key Features

- Multi-User Client/Server Environment
- Local & Enterprise Switching
- Multiple Layer Security
- Test & Monitor Access
- Auto Logging of System Events
- Intuitive Control
- Real Time Alarms
- SNMP-Compatible
- Controls Full Line of CORNET Switching Products

For example, an administrator may allow one user to create groups but not switch them. Another user may be allowed to switch specific individual lines or certain groups of lines, but not make any name changes. User ID names can be assigned for a specific time period, unusable after that time. Any user that is logged on to the system can be “forced off” if a violation is noted.

Individual lines can be assigned “Access Codes” that allow specific users access to that line.

## Test & Monitor Access

Interactive test and passive monitor functions are easily configured and implemented using CorScan control and CORNET access hardware.

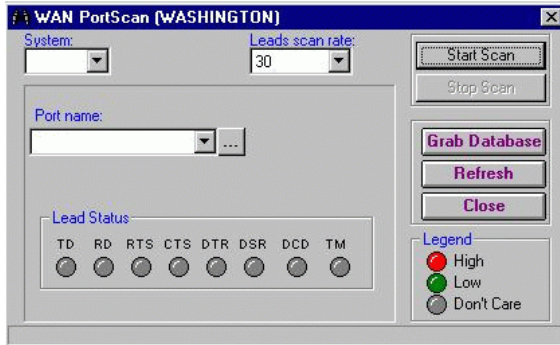
Configuring a bus for the matrix switch is as easy as selecting a pair of ports, assigning a name to them, and dedicating them to the “bus” function. The ports can then be used to “Break” the line to either side and run

## Auto Logging of System Events

All activity on the CorScan system is automatically logged in an event log. The size of the log (up to 10,000 entries) is determined by the user. At any time, the event log can be sent to a local logging printer for a permanent hard copy or archived at any location specified by the user. Any event that occurs in the CorScan system is logged with the logged-on User ID, the Event, the Time of the Event, and the Date of the Event. Thus network managers always know what’s connected and who has made changes.

## Real Time Alarms

Each line in the enterprise system, passing through a CORNET switch, can be monitored for specific alarm and lead status conditions. CorScan makes the alarm configuration easy to implement and even easier to monitor. Each port is monitored for the leads shown in the following drawing.



Information concerning the Interface type, status of the Loopback switch, and In-Sync status of the card is automatically read from the port card and displayed.

## SNMP-Compatible

All versions of CorScan can be controlled by any standard SNMP Manager. CorScan has a built in SNMP Agent that allows access to all CorScan functions. Client software is available to run on Windows™ 95, Windows NT, and SUN SOLARIS™ workstations.

With CorScan, client workstations can be distributed throughout an IP network providing convenient and secure control access regardless of location.

## Switching Flexibility

Control single, group, broadcast, even multidrop connections from a single control platform. CorScan makes it easy to control your network regardless of its complexity or diversity. All control is based on line names that you choose.



## Complete Control

Configuring CORNET switches is a breeze with CorScan. Installation is a straightforward and quick process, load CorScan and use it to immediately make connections. It's predefined database and naming convention eliminates the need to enter a customized name for every port before a connection is made. Need to make a name change? Do so easily when it makes sense.

CorScan gives any operator with access privileges, regardless of location, the ability to access and manage a CORNET matrix switch's full suite of service tools (Modem Eliminator, Breakout Box, BERT testing, and Interface conversion, etc.).

Individual ports are easily configured from CorScan System Setup screens. With CorScan, individual ports, of CORNET's flexible and powerful matrix switch, are configurable to function in many different modes of operation. CorScan easily allows: changing port speed when the matrix switches Modem Eliminator functions is activated; configuration the switch to loopback all incoming data by simply clicking on the "loopback" radio button for a specified port.

Other port configurations managed through CorScan include:

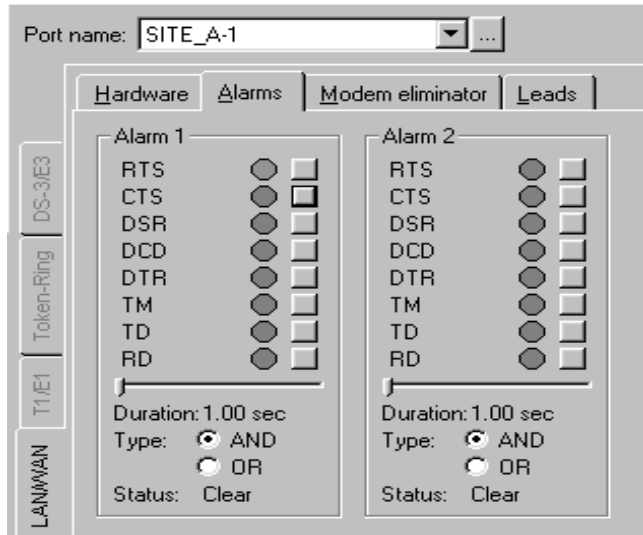
## DTE to DTE with a built-in Modem Eliminator function. (Connection Mode selection area)



## Individual interface leads can be set High or Low



## Alarms can be configured on each port.



## The Ultimate in Control

CorScan is a powerful, easy -to-use control system designed to manage the *most* powerful matrix switch in the industry, the CORNET MTX Series Digital Matrix Switch.

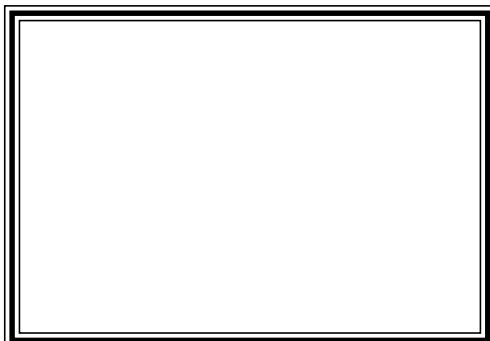
CorScan provides exceptional:

- ✓ Control of any type of data port (RS-232, V.35, T-1, DS-3, Analog, or Video), anywhere in the enterprise system, from anywhere in the enterprise system.
- ✓ Group switching ability. Reconfigure the entire network in a single command or run a simple Data Line Monitor on the line next door, all with the same ease-of-operation.
- ✓ Control of A/B switching functions, digital and analog access functions -- even control switches not designed by CORNET.

Innovative engineering and "Made in the USA" quality have created unique solutions to many switching requirements. Let us help you with your switching requirements.

***Give us a call at (703) 658-3400.***

**Your CORNET Distributor is:**



## Specifications

PC Requirements:	Pentium 90 MHz (Client) 120-150 MHz (Server) Prefer Pentium 2 with 128 MB RAM
Drives: (Server)	1ea. 3.5" Floppy, CDROM 1 GigaByte SCSI for Server.
Monitor:	SVGA, 800x640 minimum
Pointing Device:	Bus Mouse
RAM (Server):	16 MByte for 1-4 Clients 32 MByte for 4-8 Clients 64 MByte for 8-16 Clients
(Client):	16 MByte
Software:	Windows NT or Windows 95, TCP/IP
Network Card:	Intel preferred
Software:	Windows 4.0 with Service Patch 3 or above NT (Server) Windows 4.0 NT or Windows 95 (Client)



6800 Versar Center, #216  
Springfield, VA 22151-4147  
703.658.3400  
703.658.3440 (Fax)  
[www.cornet.com](http://www.cornet.com)

In the interest of continuous improvement, CORNET Technology, Inc., reserves the right to change specifications without prior notice